

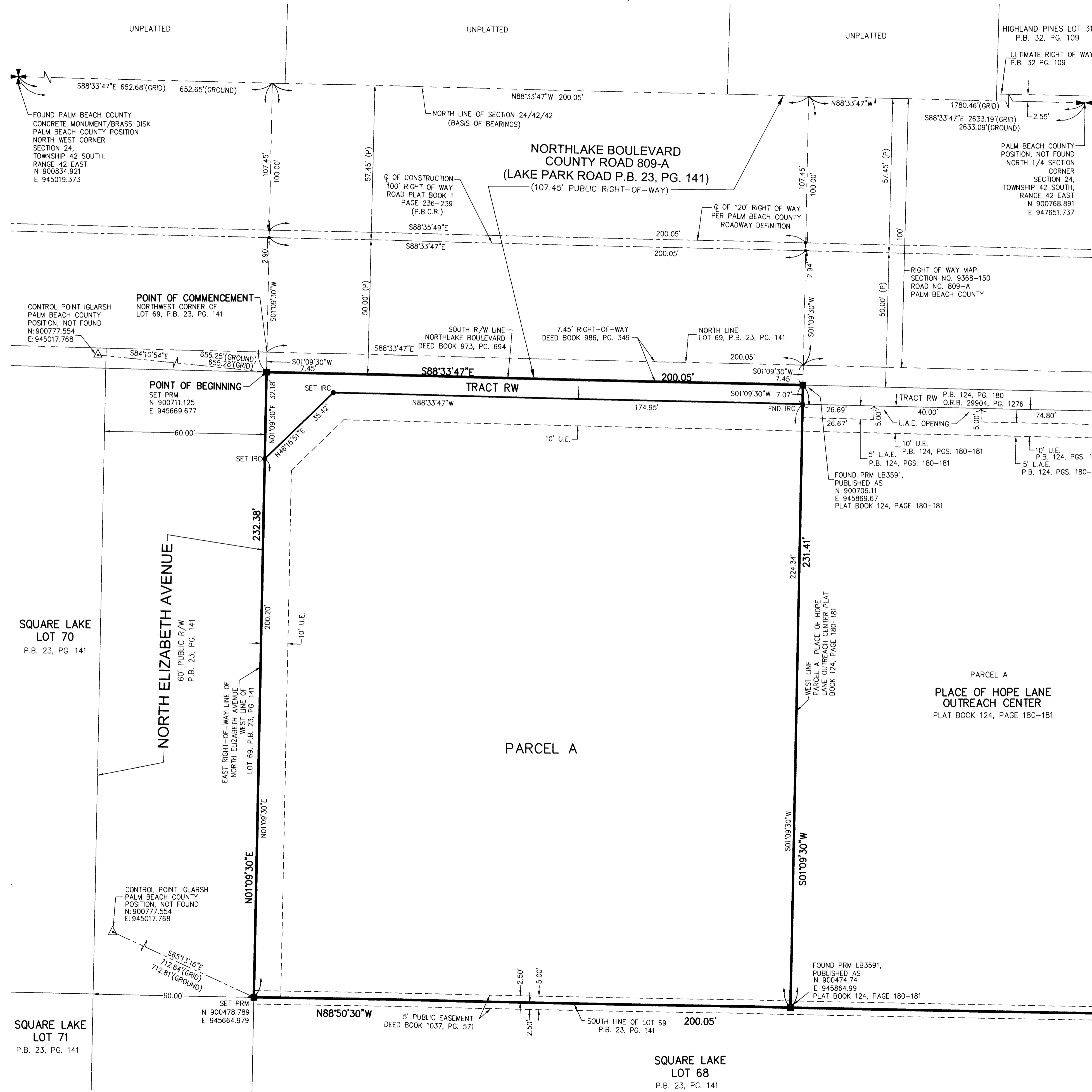
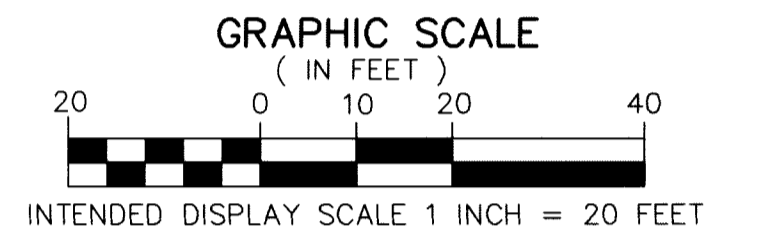
PLACE OF HOPE COMMERCIAL WEST

BEING A REPLAT OF A PORTION OF LOT 69 OF SQUARE LAKE,
AS RECORDED IN PLAT BOOK 23, PAGE 141 OF THE
PUBLIC RECORDS OF PALM BEACH COUNTY, FLORIDA
LYING IN SECTION 24, TOWNSHIP 42 SOUTH, RANGE 42 EAST,
PALM BEACH COUNTY, FLORIDA

THIS INSTRUMENT PREPARED BY
DAVID P. LINDLEY
OF
CAULFIELD and WHEELER, INC.
SURVEYORS - ENGINEERS - PLANNERS
7900 GLADES ROAD, SUITE 100
BOCA RATON, FLORIDA 33434 - (561)392-1991
CERTIFICATE OF AUTHORIZATION NO. LB3591

90

SHEET 2 OF 2



LEGEND/ABBREVIATIONS

- CL - CENTERLINE
- COR - CERTIFIED CORNER RECORD
- E - EASTING (WHEN USED WITH COORDINATES)
- FND - FOUND
- L.A.E. - LIMITED ACCESS EASEMENT
- LB - LICENSED BUSINESS
- L.W.D. - LAKE WORTH DRAINAGE DISTRICT
- N - NORTHING (WHEN USED WITH COORDINATES)
- O.R.B. - OFFICIAL RECORD BOOK
- P.B. - PLAT BOOK
- P.B.C.R. - PALM BEACH COUNTY RECORDS
- PG(S) - PAGE(S)
- (P) = DENOTES ROAD PLAT BOOK 1, PAGE 236 PALM BEACH COUNTY RECORDS
- R/W - RIGHT-OF-WAY
- U.E. - UTILITY EASEMENT
- PRM - DENOTES PERMANENT REFERENCE MONUMENT 4" x 4" x 24" CONCRETE MONUMENT WITH ALUMINUM DISK STAMPED "C&W PRM LB3591"
- IRC - DENOTES 5/8 INCH IRON ROD AND CAP LB3591
- △ DENOTES PALM BEACH COUNTY CONTROL POINT

NOTES

COORDINATES, BEARINGS AND DISTANCES
COORDINATES SHOWN ARE GRID
DATUM = NAD 83 (90 ADJUSTMENT)
ZONE = FLORIDA EAST
LINEAR UNIT = US SURVEY FEET
COORDINATE SYSTEM 1983 STATE PLANE
TRANSVERSE MERCATOR PROJECTION
ALL DISTANCES ARE GROUND, UNLESS OTHERWISE NOTED
SCALE FACTOR = 1.00003771
GROUND DISTANCE X SCALE FACTOR = GRID DISTANCE
BEARINGS AS SHOWN HEREON ARE GRID DATUM,
NAD 83 (90 ADJUSTMENT), FLORIDA EAST ZONE.